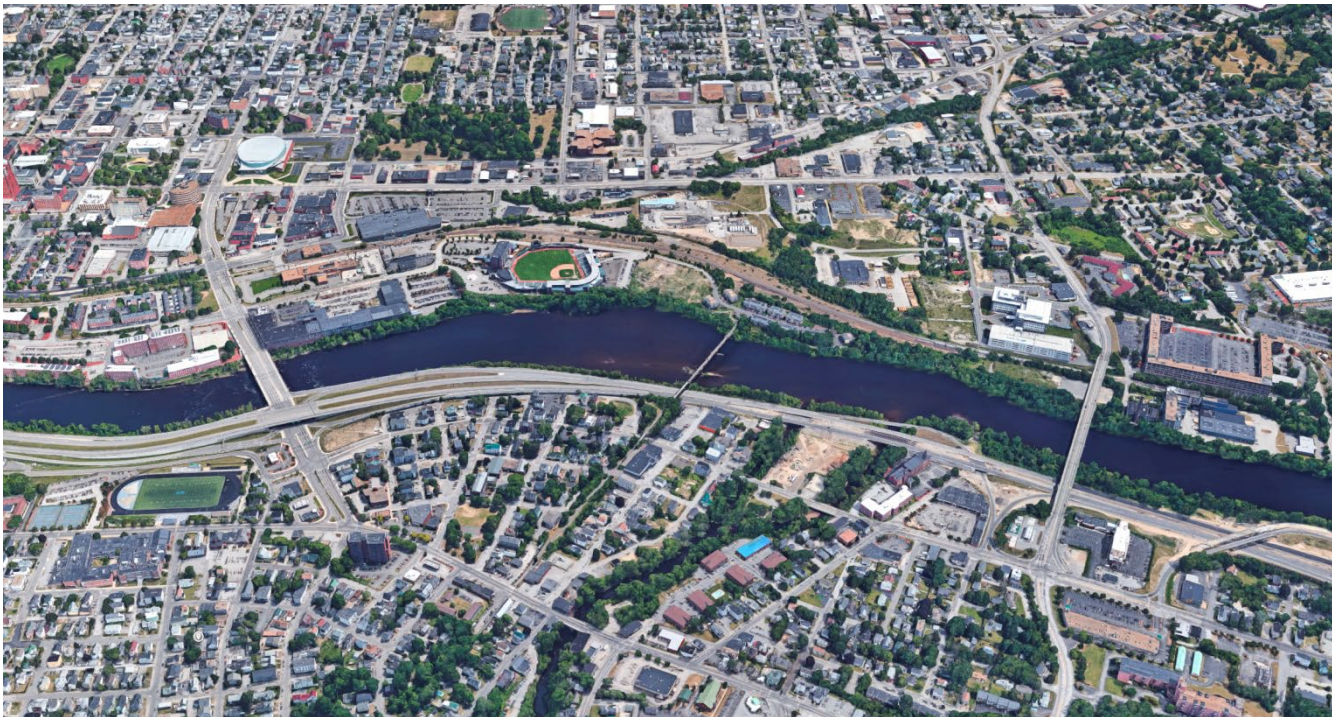


RAISE Manchester: Transportation Funding Opps for Community Building

2023 Plan New Hampshire Fall Conference



**The City of
Manchester, NH**



FUSS & O'NEILL

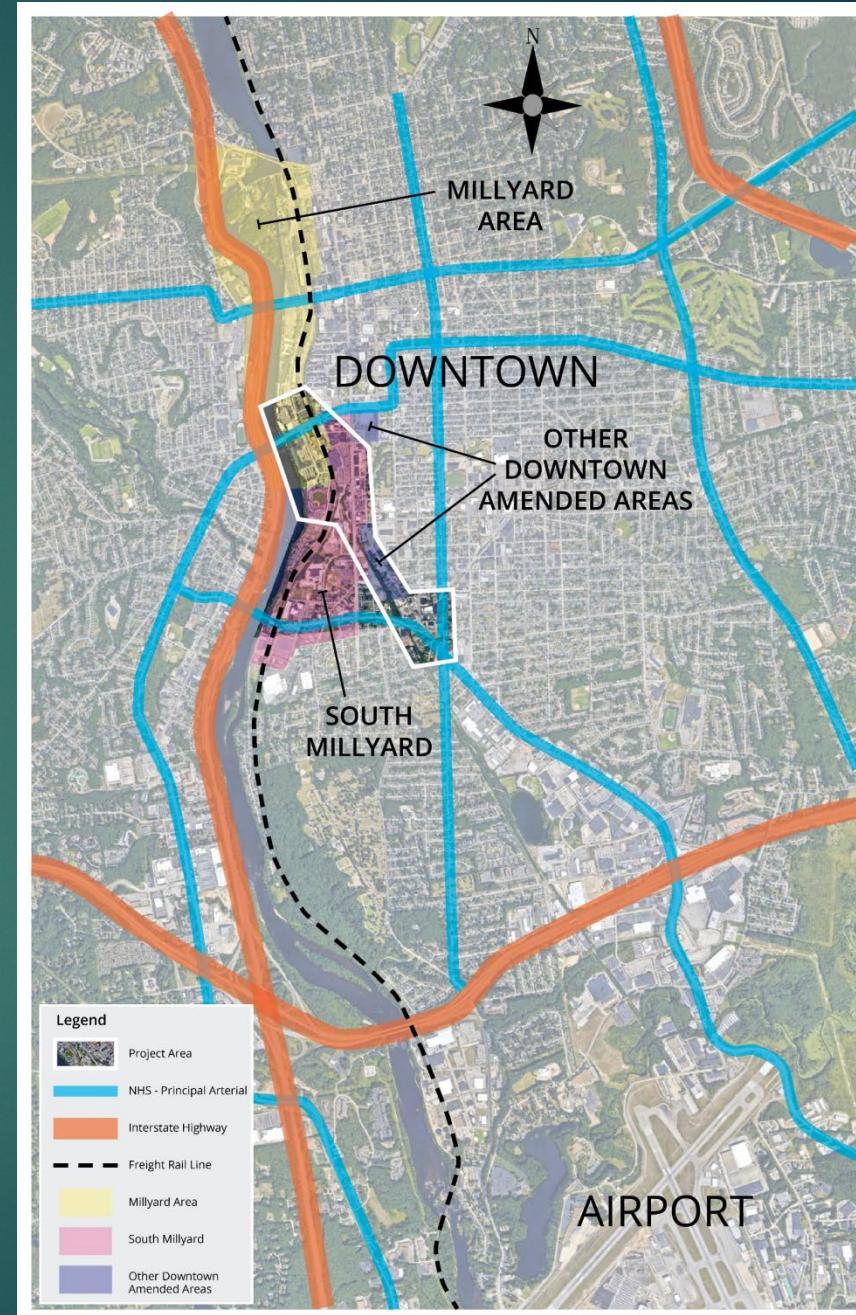
Vibrant places are connected places – connected for all!

- ▶ Great facilities uses are not great unless the community can access them equitably
 - ▶ Housing
 - ▶ Childcare/Education
 - ▶ Recreation/natural resources
 - ▶ Jobs/merchants/food
 - ▶ Transportation systems
- ▶ Exponential benefits



Project Area – South Millyard

- ▶ Adjacent to Millyard- heart of economic history and rebirth
- ▶ Adjacent to Downtown
- ▶ Bordered by retail area at South Willow St.
- ▶ Project provides direct connection between these
- ▶ Also provides multiple convenient options for connection to I-293

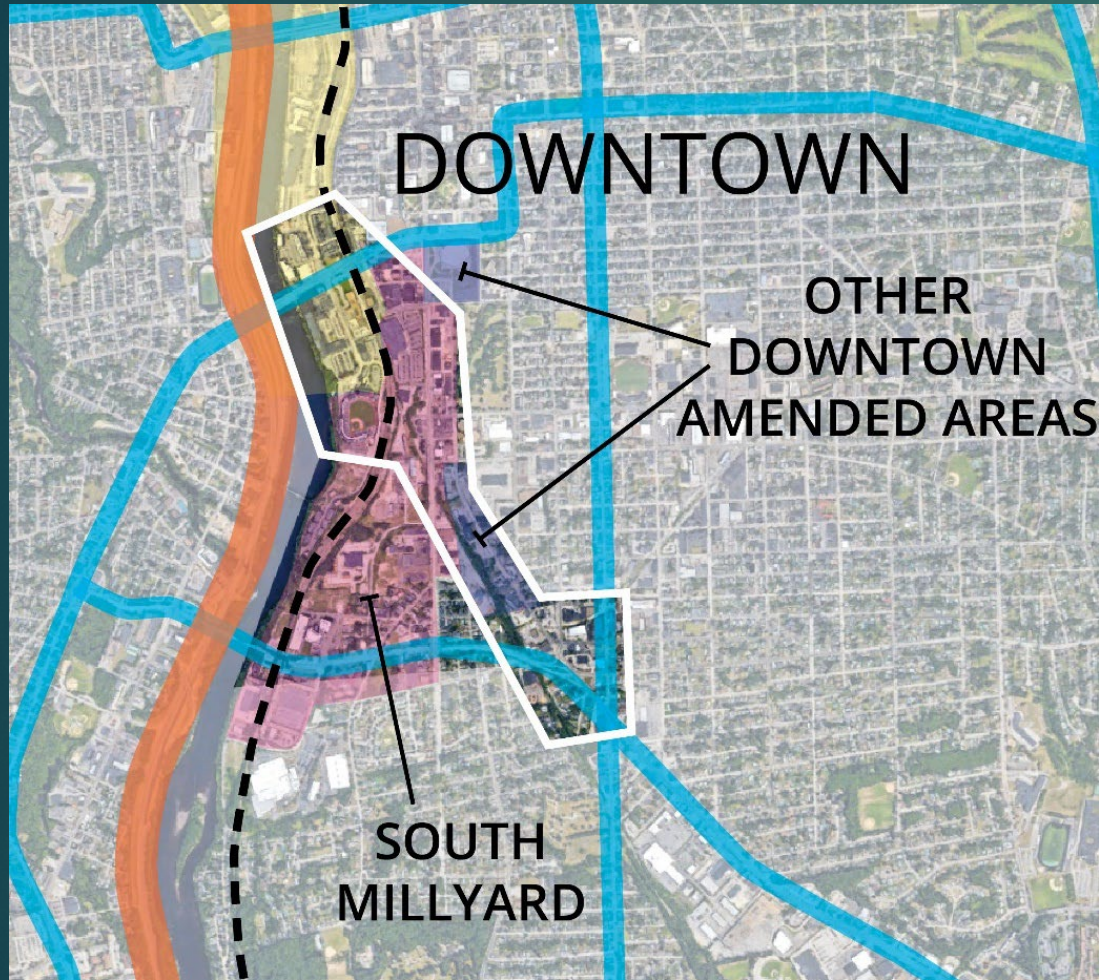


Disconnection from Surrounding Areas

Limited East-West Travel Options/Traffic Congestion/Limited Transportation Options



Raise Grant Project Goals

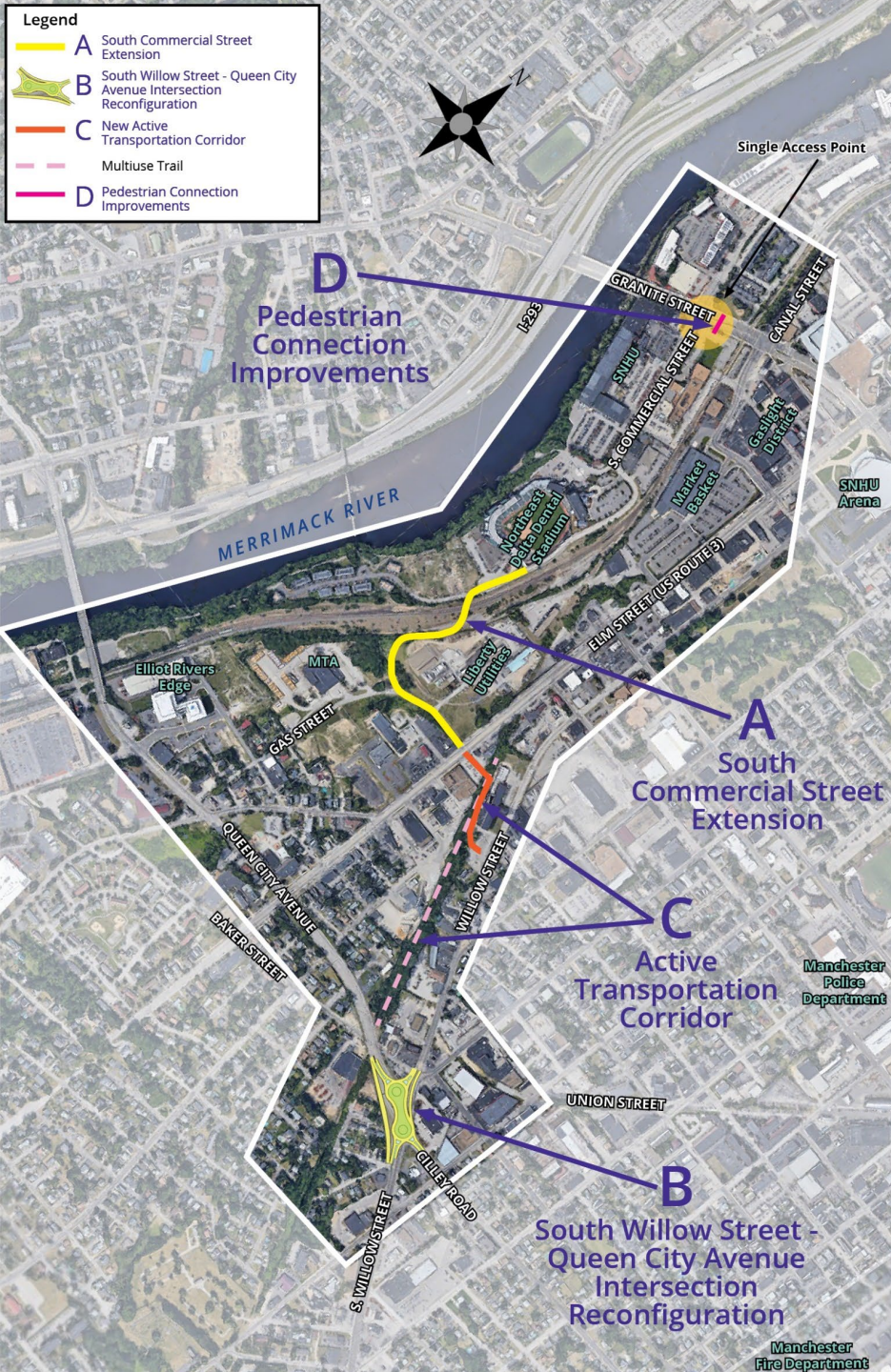


- ▶ Reconnect South Millyard Area revitalized Millyard and Downtown areas
- ▶ Increase vehicular and pedestrian safety
- ▶ Reduce traffic congestion into project area for adjacent interstates
- ▶ Increase pedestrian and bicycle connectivity
- ▶ Leverage private investment by building infrastructure to make redevelopment attractive





RAISE Grant Project Components



2021 RAISE Grant Project Components

- A. South Commercial Street Extension
- B. South Willow Street-Queen City Avenue Intersection Reconfiguration
- C. Gas Street Extension and Active Transportation Corridor
- D. Pedestrian Connection Improvements



Component A: South Commercial Street Extension



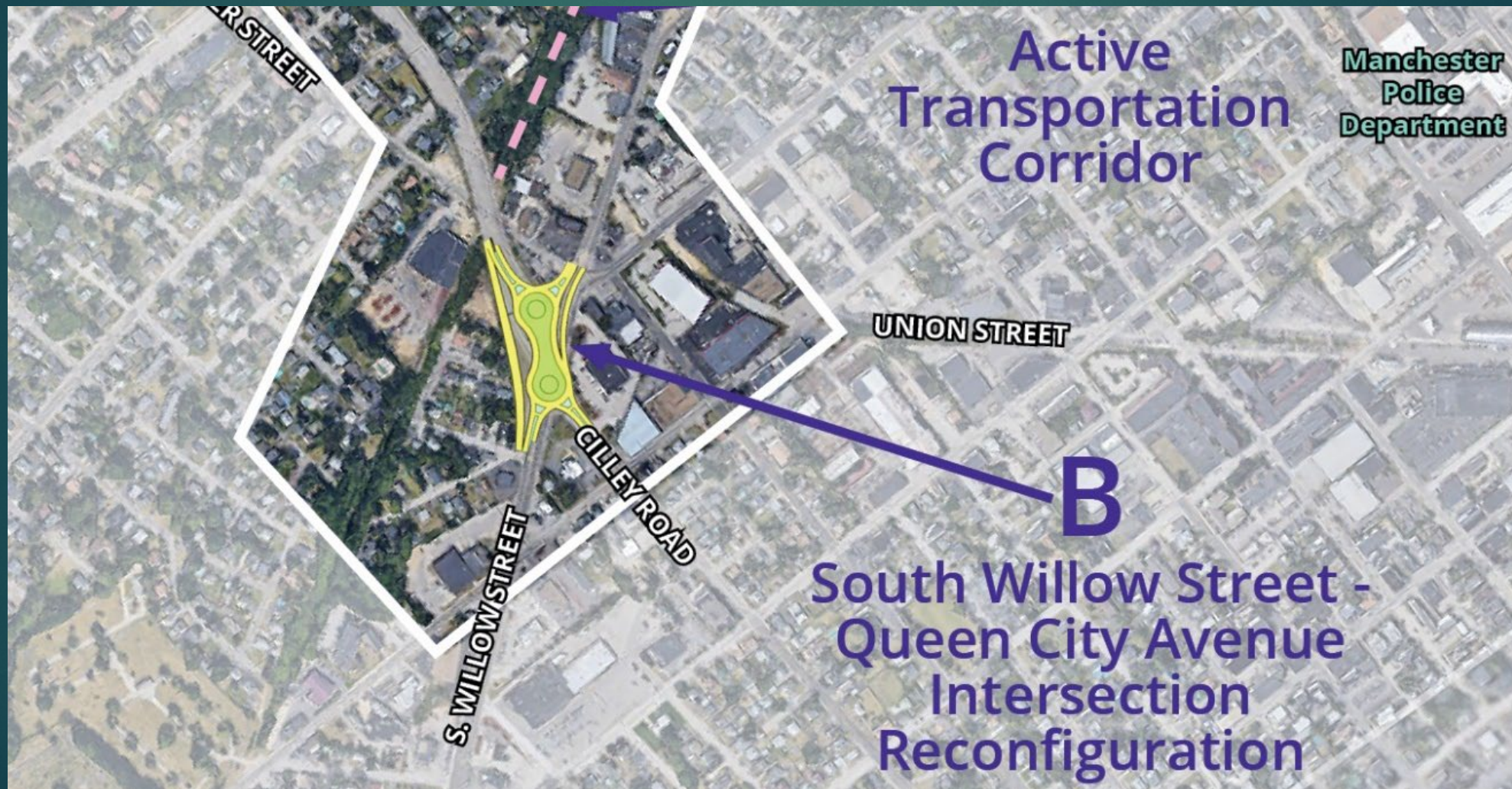
Component A: South Commercial Street Extension



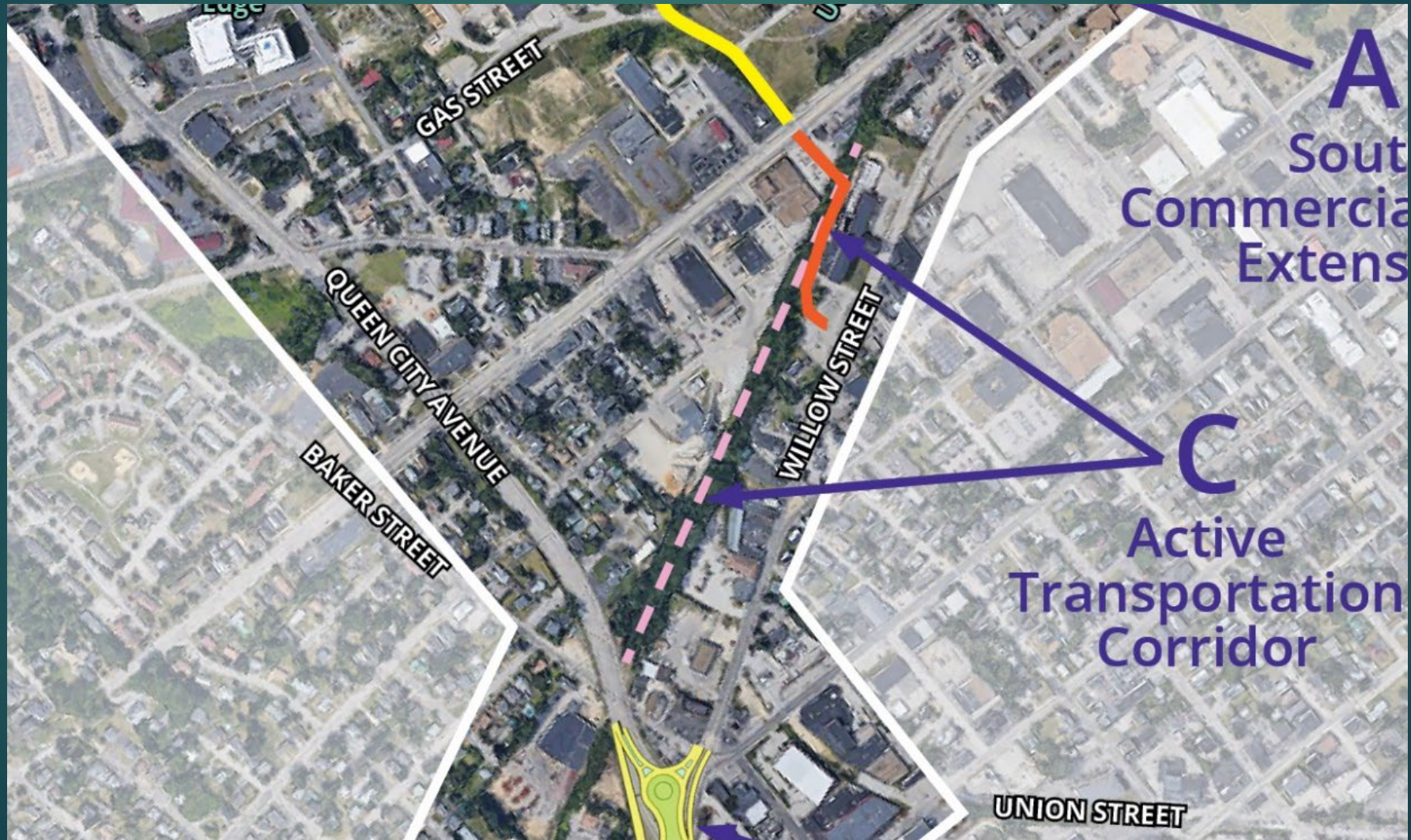
Component B: South Willow Street – Queen City Avenue Intersection Reconfiguration



Component B: South Willow Street – Queen City Avenue Intersection Reconfiguration



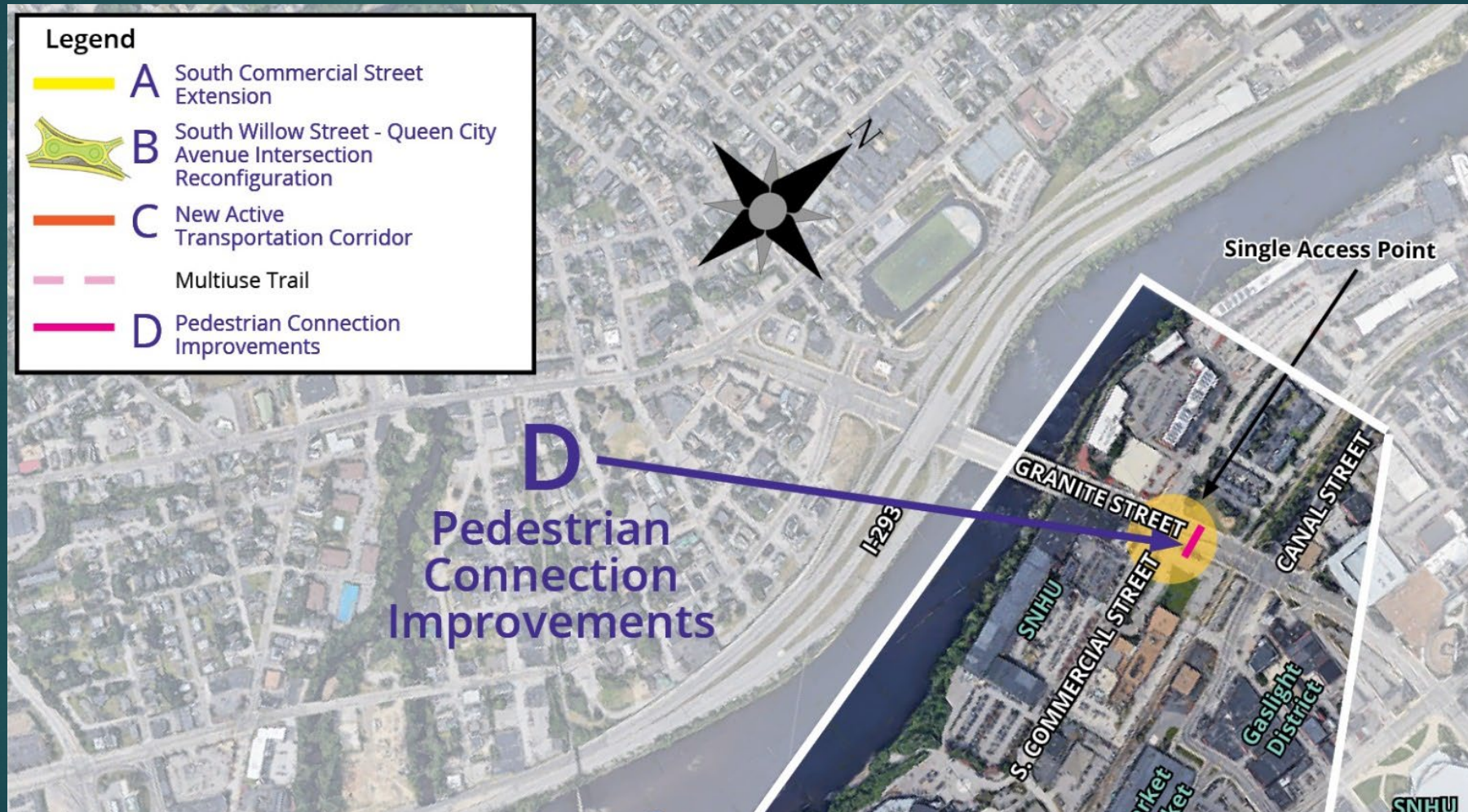
Component C: Gas Street Extension and Active Transport Corridor



Component C: Gas Street Extension and Active Transport Corridor



Component D: Pedestrian Connection Improvements



Component D: Pedestrian Connection Improvements

BEFORE



Component D: Pedestrian Connection Improvements

AFTER





Manchester Wins \$25 Million 2021 RAISE Grant: Keys to Success

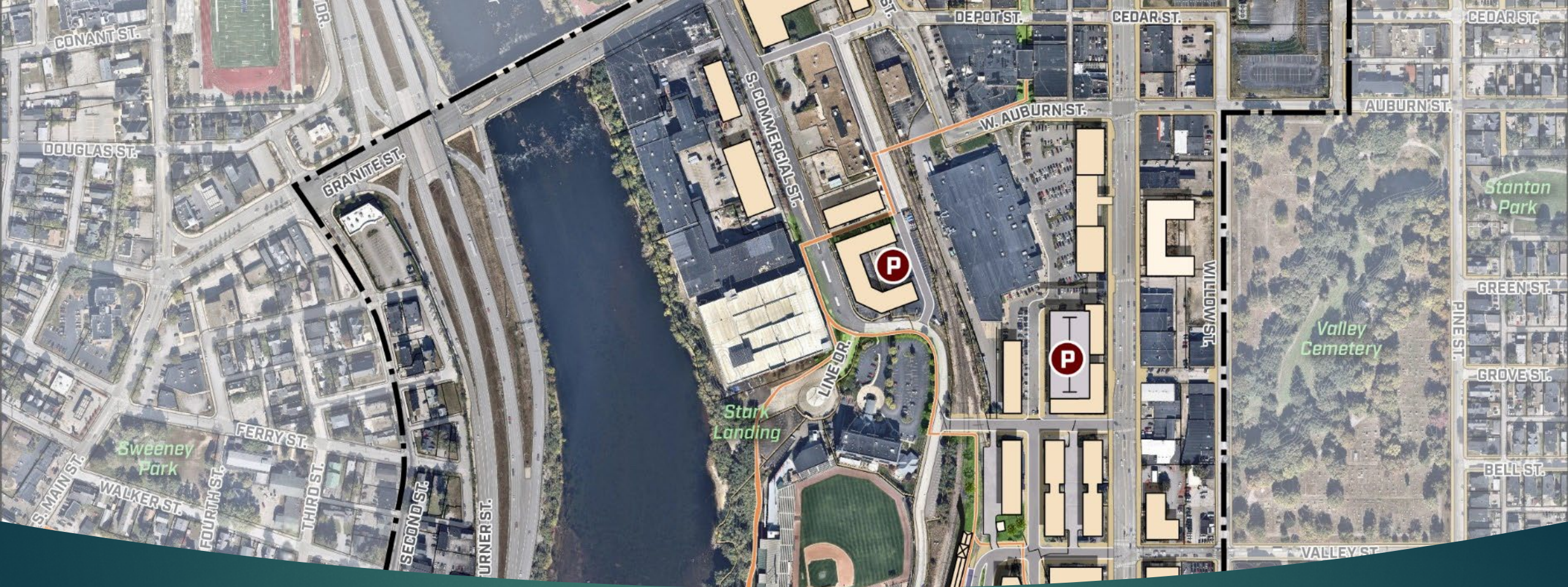
- A. Stakeholder/community engagement
- B. Evolving project to fit NOFO grant criteria
- C. Paying attention to changing Federal grant criteria



City of Manchester's Goals for Community Engagement

- ▶ Identify issues that stakeholders want to see addressed
- ▶ Identify infrastructure solutions that address key issues
- ▶ Connect infrastructure solutions to regional and local planning efforts and capital projects
- ▶ Build broad support for proposed infrastructure improvements
- ▶ Use engagement and support to yield grant funding and public-private investment





Charrette Outcomes (6) Led to Winning Grant

Project Outcomes: Increase Connections to/from South Millyard and Mitigate Congestion

- Connect South Commercial Street to the existing street network – multiple options in short and long terms



Charrette Outcomes: Putting Cars in Their Place

- ▶ Area is developed mostly for cars
- ▶ Change streets to more “complete streets”
- ▶ More responsive signal systems
- ▶ Improve access to highways



Charrette Outcomes: Increasing Transportation Options

- ▶ Multi-modal transportation hub
- ▶ Rail, trolley, bus, bike,
- ▶ Accommodate commuter rail
- ▶ Shuttle that runs north south



Charrette Outcomes: Increase Pedestrian Accessibility, Comfort and Safety

- ▶ Pedestrian bridge over Granite Street
- ▶ East-west pedestrian access through all of South Millyard
- ▶ Improve sidewalks and streetscapes
- ▶ Improve overall connectivity – eliminate gaps



Charrette Outcomes: Increase Bicycle Accessibility, Comfort and Safety

- ▶ More connected multi-use bike paths
- ▶ Mobility corridor on B&M railroad
- ▶ Separated bike lanes
- ▶ Safe bike parking



Charrette Outcomes: Create Opportunities for Redevelopment

- ▶ Multi-use buildings
- ▶ Housing use
- ▶ Attractions and dynamic uses
- ▶ Revisit zoning





Thank You

