

# *Brentwood Community Design Charrette*

Brentwood, NH  
May 12-13, 2023





# Brentwood Community Design Charrette Acknowledgments

Thank you to the individuals who donated their time, energy, and expertise for this charrette.  
Extra thanks to all the community members who shared their insights about Brentwood.

## Plan NH Charrette Team

Tiffany Tononi McNamara

Plan NH, Executive Director

Jamie Simchik (Charrette Co-Leader)

Simchick Planning & Development

Sarah Wrightsman (Charrette Co-Leader)

New Hampshire Housing

Alissa Del Tufo

Plan NH, Program Manager

Christian Zepeda-Lipovsky (Report Writer)

University of New Hampshire Student

C.R. Willeke

NH Department of Transportation

Bob White

GPI

David Bartsch

Bartsch Landscape Architecture

Jeff Hyland

Ironwood Design

Jenn Rowden

Rockingham Planning Commission

Kyle Barker

Barker Architects, PLLC

Leah Withers

University of New Hampshire Student

Lisa Burk-McCoy

NH State Council on the Arts

Nate Bernitz

UNH Cooperative Extension

Makayla Edgecomb

University of New Hampshire Student

William Cleveland

University of New Hampshire Student



## Brentwood Community Thank Yous!

Economic Development Committee

Recreation Committee

Planning Board

Bob Rossman

Economic Development Committee

Stef Kizza

Planning Board, Economic Development Committee

Andy Gray

Brentwood Recreation Director



# Who is Plan NH?

**Plan New Hampshire (Plan NH)**, is a 501(c)3 non-profit organization formed in 1989. Plan NH has a vision of a New Hampshire that is vibrant and healthy for its people, its economies, and the environment. To achieve that vision, Plan NH's mission is to *foster excellence in planning, design and development of New Hampshire's built environment*, because we believe that what we build, where we build, and how we build anything has a significant impact on that vibrancy and health.

Plan NH champions principles and ideas that balance the built environment - including buildings, roads, bridges, memorials, public sculpture - with:

- the needs of people, including where they live, how they get about, what services are necessary, what they value;
- maintaining a “sense of place” of our towns, cities, and villages that make them unique, including preserving historic assets, open spaces, agriculture, and farming;
- and protecting our air, water, flora, and fauna.

Among our signature programs is the Community Design Charrette Program, a participatory exercise that brings professionals from our membership together with New Hampshire communities to explore design ideas, usually around a village center or other significant neighborhood or community asset. Through recommendations made, Plan NH can demonstrate the role and importance of the principles and ideas noted above in concrete, real examples.





# Why did Plan NH come to Brentwood?



The Town of Brentwood submitted an application to Plan NH in November of 2022 to reimagine the centrally located Brentwood Recreation Center.

The Town was seeking assistance to address three main areas of focus/opportunity:

- Reimagining the centrally located “Brentwood Rec” (located at 190 Rte. 125), resulting in an improved community quality of life for current residents and enhancing Brentwood as an attractive location for employers and their talented workers.
- Furthering the 2018 study *Promoting Parks and Recreation’s Role in Economic Development* which states: “Investments that strengthen quality of life can spur sustained economic growth that attracts talent, which in turn supports business attraction and development.”
- Envisioning a centrally located area for large community gatherings, celebrations, events, concerts, Farmer’s Markets, sports tournaments, and more.





# Plan NH in Brentwood, NH

May 12-13, 2023

## What is a charrette?

Simply stated, a charrette is a brief, intense, brainstorming session in which ideas are brought together for the purpose of defining potential planning recommendations and possible design solutions for an identified need. For Plan NH, this is usually related to a village center or other significant neighborhood or community asset.

Plan NH's Community Design Charrettes take place over the course of two days: eight hours on a Friday spent touring the target area and listening to stakeholders and community member, and another eight hours the next day brainstorming, crafting custom recommendations, and presenting those recommendations to the community.

The process engages planning and design professionals in direct dialog and

conversation with each other and with local residents to collect information needed in order to develop good and relevant recommendations about how to address a particular challenge. Plan NH sees this part of the process as a period of discovery, with the Charrette Team discovering who the community is, what they value, and what they really want. This community input is essential and critical to the value of the outcomes.

The results of a Plan NH charrette are general and overarching planning and design recommendations, rather than specific directions. Plan NH does not dictate but suggests. Most often, the outcome of a Plan NH charrette is described as a "vision" - an expression of how things might be, based on what the team saw, heard, and learned.

*Charrettes blend the broad experience of planning and design professionals with local citizens' detailed knowledge of their own community to develop recommendations that address challenges and opportunities for a specific project area. These recommendations provide a framework within which more detailed solutions and plans of action can be developed.*



*Our charrette team works together to prepare materials to share findings to the public.*



*A landscape architect drawing a sketch of one of the project elements in advance of the presentation.*



# Site Tour Observations



*Plan NH would like to thank our wonderful tour guides for an engaging and insightful tour of the Brentwood Recreation Center!*

On Friday morning, the Recreation Director for the Town of Brentwood led our Charrette Team on a tour of the Brentwood Recreation Center and Fields, including the existing amenities and nearby trails.

We observed the challenges associated with the entryway to the rec area, parking, pedestrian safety, and space constraints. We learned that the fields are heavily used by multiple groups and for multiple types of activities for most of the calendar year. We also learned that the parking lot, playground, nearby trails, and other areas are heavily used by people of all ages, though safely navigating the area can be challenging depending on what shares uses are taking

place. We learned about and witnessed other shared and cooperative uses from groups such as the New England Blacksmiths, the Lamprey River Bowhunters, and Philips Exeter Academy.

We noted that many of the rec area amenities underutilized, such as the concession stand, or in need of some repair, such as the bleachers. We also noted the mobile lighting that is utilized in the fall in order for organized activities to continue after dark.

We saw and heard about the many local volunteer groups who helped develop the rec area. The community pride was evident in the signage of the play area, handmade benches, and even custom trash cans from the Blacksmiths.





# What Brentwood Leaders Told Plan NH

## What Plan NH Heard from Community Leaders

After the tour of the Recreation Center and Fields in Brentwood and a hearty lunch, the team met with key community leaders, including Town staff, Board and Commission Members, local business owners, and key property owners. Through a facilitated discussion we heard about the challenges and opportunities from their perspectives, as those that work in and serve the Town on a daily basis. Many of these challenges and findings are intertwined in terms of their causes and potential solutions.

### Challenges Voiced:

- Securing funding for renovation projects
- No real bathrooms besides within Recreation Center
- Number of parking spaces is unable to meet demand
- Playgrounds and fields are close to parking due to constraints and this creates some safety concerns
- No permanent lighting on fields inhibits night-time activities/sports games
- Concessions are limited in terms of variety and availability
- Concerns about safely walking across the recreation area during baseball games
- Demand for new types of sports courts (e.g. pickle ball, tennis, etc.)
- Demand for more senior programming and a wider variety of recreation options
- Lack of adequate storage for equipment
- Proximity to NH-125 presents many safety concerns
- Recreation Director's offices are not located at the Recreation Center

### Potential Opportunities :

- Increasing revenue from Recreation Center, both facilities and programming
- Building year-round bathroom facilities
- Building permanent field lighting
- Creating more parking
- Increasing programming and events (especially for senior citizens)
- Adding more amenities (splash pad, community garden, more courts, etc.)
- Increasing concessions and engaging volunteer groups with concessions
- Forming local partnerships and sponsorships
- Creating an expanded community center for Brentwood
- Creating a civic space where town meetings and elections can be held
- Creating an educational space for potential use by Brentwood schools
- Creating an economic space (hold events like farmers markets, antique shows, etc.)
- Incorporating arts and art activities in more meaningful ways (for all ages)





# What Brentwood Residents Told Plan NH

*(Continued)*

Two public listening sessions were held during the afternoon and evening of Friday, May 12. The sessions served as an opportunity for the public to share their comments and ideas about the various challenges and opportunities throughout the project area. Plan NH's process encouraged participation and input from everyone in the room. The residents in attendance shared their opinions about how to preserve Brentwood's current assets while looking to explore ways to improve. It was obvious to the Charrette Team that community is invested in their Town and passionate about its future, and we were excited to explore the possibilities with them.

Throughout this session six major themes emerged:

- Dangers of NH Route 125
- Trail Connectivity
- Community Engagement
- Facilities/Amenities
- Parking/Accessibility
- Multi-Use Spaces & Fields

## Dangers of NH Route 125

- Challenge to navigate for both drivers and pedestrians
- Barrier to connectivity - separates Recreation Center from other key assets in town
- Pedestrian tunnels or paths could promote walkability and connectivity
- Many residents are already walking where it is safe, especially near the Public Library and around Lindy's Country Store
- "125 is a terrible representation of what Brentwood is."

## Trail Connectivity

- Trails highlight the natural beauty of Brentwood - great asset to community
- Residents enjoy current events like holiday stroll and haunted stroll that take place on the trails
- Desire for safe collaboration between various uses by bowhunters, cub scouts, hikers, bikers, etc.
- Trails to accessory parking lots
- Better trail marking - many people are not aware of the trailheads/extent of trail network



# What Brentwood Residents Told Plan NH

(Continued)

## Community Engagement

- “Things are built by the community for the town, not the other way around.”
- Proud spirit of volunteerism - desire and motivation to be involved
- Long history of active community groups (i.e. bowhunters, blacksmiths, etc.)

## Facilities/Amenities

- Unsatisfied with current porta-potty situation - prefers fully functional bathrooms, but understand the challenges
- Larger/higher quality porta-potties could be an interim solution, possibly provided by local company
- More food options at concession stand - hot food, refrigerated food, healthier options, more snacks
- Better lighting for nighttime games and safety

## Parking/Accessibility

- The parking lot is beyond capacity Saturdays, election days, and during tournaments
- Visitors often have to park in the grass/forest/side of the road
- Vehicles are sometimes blocking the emergency access routes which is cause for concern
- Nearby empty lots and small parking lots have potential to be connected if made safer and walkable

## Multi-Use Spaces & Fields

- Interest in maintaining current sport options and adding additional specialty activities like pickleball
- Specialty fields/courts mentioned - softball, bocce ball, shuffleboard, larger ice rink, disc golf, pickleball courts, sand volleyball, improved basketball court
- Utilize soccer fields for multiple recreational uses such as food trucks, youth/summer camps, community events, outdoor concerts



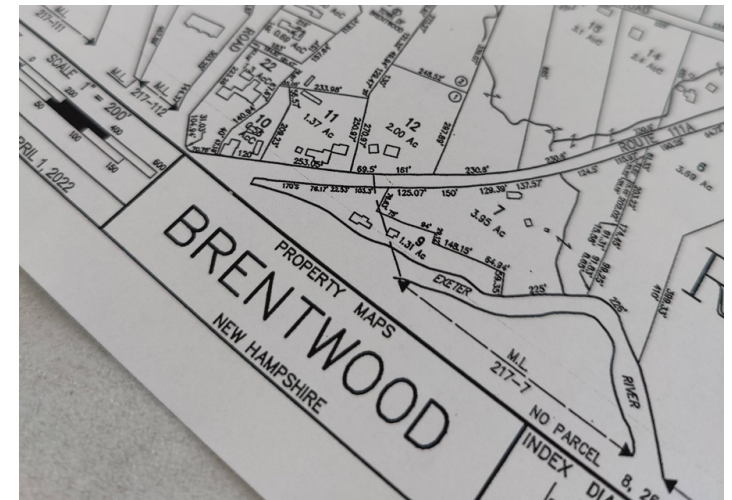
# Recommendations

Based on what the Plan NH Charrette Team learned from our walking tour and the stakeholder and community listening sessions, we developed a series of custom recommendations meant to address the concerns we heard about the target area. These recommendations were presented in-person to the community on Saturday, May 13, and are included in more detail in this report.

The Charrette Team developed the following recommendations for potential ways to address the community's vision:

- 1. Community Sports Fields** - *pages 10-14*
- 2. Multi-Purpose Community Center** - *pages 15-17*
- 3. Route 125, Access, & Parking** - *pages 18-21*
- 4. Operations of the Community Center** - *page 22*
- 5. Trails & Regional Connectivity** - *page 23*
- 6. Community Design & Placemaking** - *pages 24-25*

**Full View of Recommendations** - *page 26*





# Community Sports Fields

Sports fields are the major occupation of space on the community park property. The preservation and expansion of field usability is a high-priority among many community residents.

The Charrette advanced a plan to demonstrate the potential of the site to offer expanded fields and better accommodation of all the fields and adjacent uses. Improvements could include the following ten recommendations:

1. Improve the driveway between the community center in the parking for athletics.
2. Organize and expand the parking for athletics to have significantly more capacity through better site layout, organization, and strategic construction of parking lots.
3. Provide a series of supplemental play areas along the parking for ease of access and close proximity for parents in families as well as the active paved surface play areas such as basketball, playground, and water play areas.
4. Re-organize the major fields to offer expanded field space for rectangular field layouts that would be multipurpose (soccer, field hockey, lacrosse, etc.)
5. Retain the existing baseball field on the west, and relocate the baseball field on the east in the upper field terrace.



Figure 1: Larger Image on Page 12



# Recommendations: Community Sports Fields

(Continued)

## *Recommendations continued...*

6. Make better connections from the field areas to the adjacent trails in natural areas.

7. Use the dividing topography between the lower and upper field terraces as a public space for viewers to access all of the athletic fields for viewing in both directions. This space would also be ideal as a gathering and social space.

8. In the long term, it may make better sense to relocate the archery activity areas into the woodland areas to the west of the lower, athletic field terrace. This would place archery in a location that would not be in the central park space, yet still guarantees the archery community adequate access to the facility and convenient parking.

9. Create a strong, connecting walkway on either side of the new community building over to the current recreation building and develop an additional outdoor picnic, gathering, and social space on the eastern side of the recreational fields, adjacent to the new community recreation building.

10. Provide amenities for spectators for athletics, including additional seating, shade trees, as well as general area maintenance upgrades and amenities.



Figure 1: Larger Image on Page 12





Recommendations:

# Community Sports Fields

(Continued)



Figure 1: Potential Field Reconfiguration & Facility Improvements



# Recommendations: Community Sports Fields (Continued)

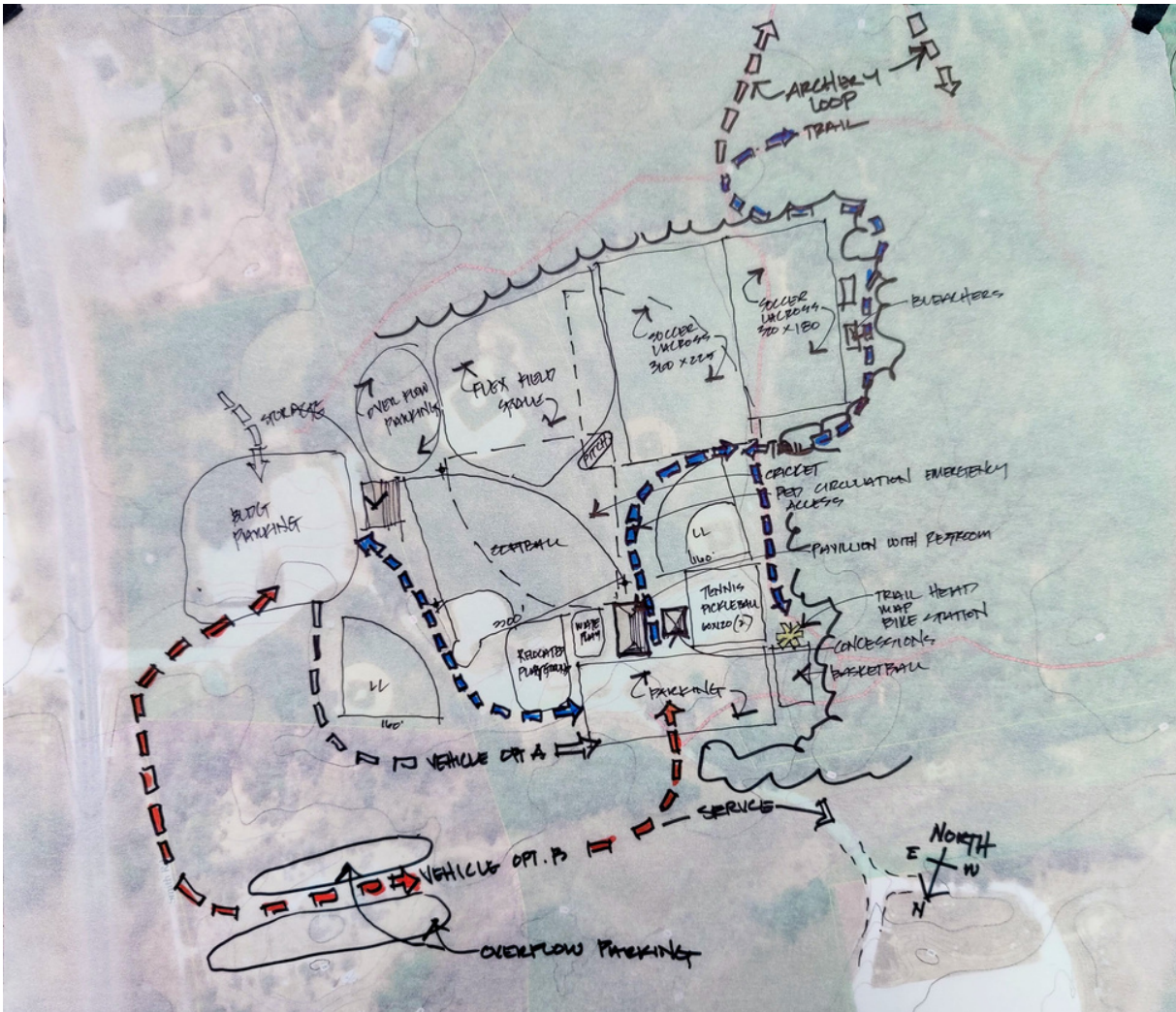
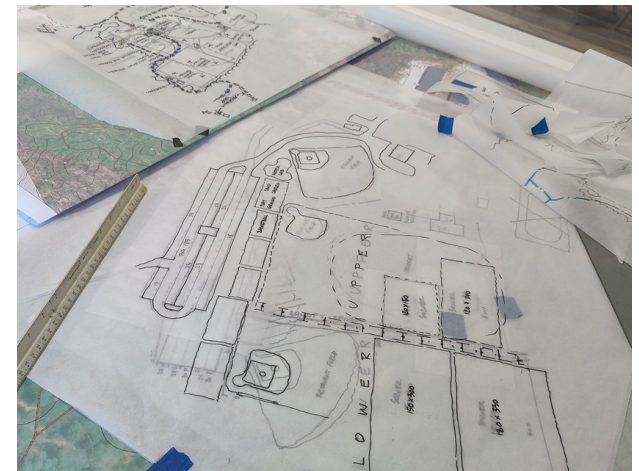


Figure 2: Another way of viewing possible field configuration is visible here in the early sketch that led to the full recommendations illustrated in Figure 1, found on page 12.



Our charrette team discusses possible field configuration, including trails and walking paths.



Recommendations for field reconfiguration come to life during the second day of the charrette.

# Recommendations:

# Community Sports Fields

## Potential Amenities to Consider

The residents of Brentwood gave a lot of constructive input and visioning into what they wanted to see at a "new" Brentwood Recreation Center. The charrette team did their best to address all major wants and needs of residents. However, some ideas did not make it into the final recommendations from the team. Below is a list of requested amenities for the Town to consider implementing along with or instead of the recommendations.

- Accessibility (ADA)
- Archery
- Bathroom Improvements
- Baseball
- Basketball
- Bike Maintenance
- Blacksmithing
- Bubble for pavilion or sports fields/courts
- Community Garden
- Concessions
- Cornhole
- Crafts Fair
- Cricket
- Disc golf
- Farmers Market
- Food Trucks
- Ice Hockey
- Lights
- Mountain Biking
- Nature Play
- Performances
- Pickleball
- Playground
- Safe Trails
- Soccer
- Speakers
- Sponsors
- Splash Pad
- Storage
- Street Hockey



Keene, NH



Hanover, NH



Newmarket, NH



Ossipee, NH



# Multi-Purpose Community Center

Throughout the stakeholder and community listening sessions, the idea of a central place that Brentwood residents could come together was a central theme. Currently, Brentwood's town facilities are highly fragmented and separated by NH Route 125. There is a lot of potential in the Brentwood Recreation Center to become this new "center of town" and become a common meeting place that many residents seem to desire.

Our team believes that Brentwood could transform the center in the following ways:

## Create a Multipurpose Community Center

- This would be a complete transformation of the current space to be a gymnasium with a stage and storage.
- This new space would serve many different uses including indoor sporting games, a new polling place, space to hold town meetings, event space etc.
- In, addition this space could also have large opening doors in the back to allow for overflow seating
- The proposed multipurpose community center building is proposed to replace the current barn used for storage.
- The new multipurpose community center would be a two-story building located on a sloping part of the site with entrances on the lower and upper levels.
- The lower level would have bathrooms and offices.
- The upper level would have a multipurpose gymnasium and community gathering space that could also include a community stage.

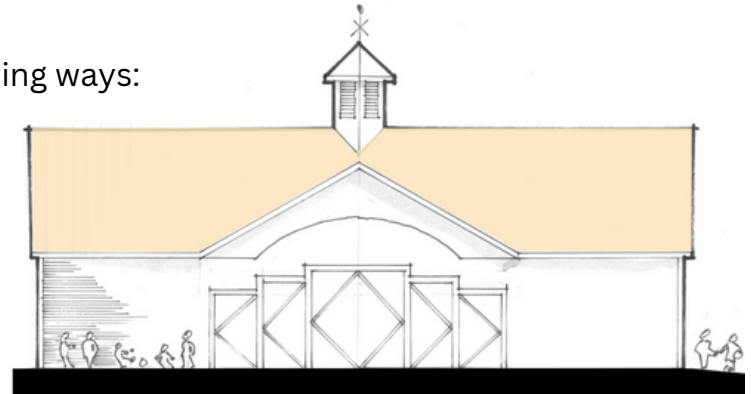


Figure 3: Example of exterior view (west elevation) highlighting elements of rural character through the architecture.

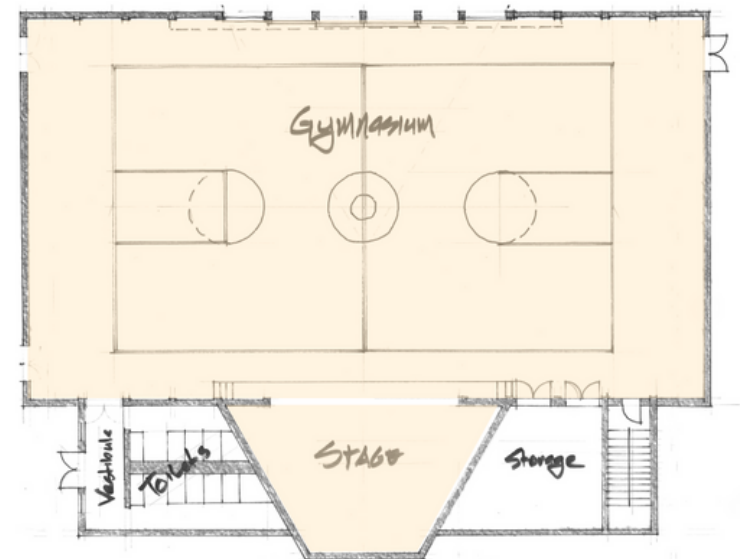


Figure 4: Example of interior layout for multi-purpose gymnasium and community event space.

# Multi-Purpose Community Center

(Continued)

## Move Town Hall to the Brentwood Recreation Center

- This idea would be in addition to the community center and allow for the concentration of town facilities and amenities to make them more accessible and less fragmented.
- In listening to the community, some residents brought up the possibility of expanding the existing town building to be a new complete town hall. The Town presently has a variety of municipal structures in independent locations around the community. We also heard consideration of future capital projects such as a new police department, separate from a fire station, instead of a consolidated public safety building.
- The separation of the town offices from other town functions could be an opportunity to bring the community back together in a more efficient way that also offers a strong sense of community cohesiveness.
- This is obviously a more expanded conversation, but the bringing together of community recreation and community administration by creating a public center for all community activities, could be a very strong and compelling project, not to mention efficient use of the resources of the community park and buildings.
- This strategy would allow for a unified community investment in terms of both capital expenses as well as the long-term cost of maintenance and operations.



Figure 5: Example of community center (right) and town hall (left) in a shared space



Figure 6: Community center and town hall concept as depicted in Figure 1 on page 12.



Recommendations:

# Multi-Purpose Community Center

*(Continued)*

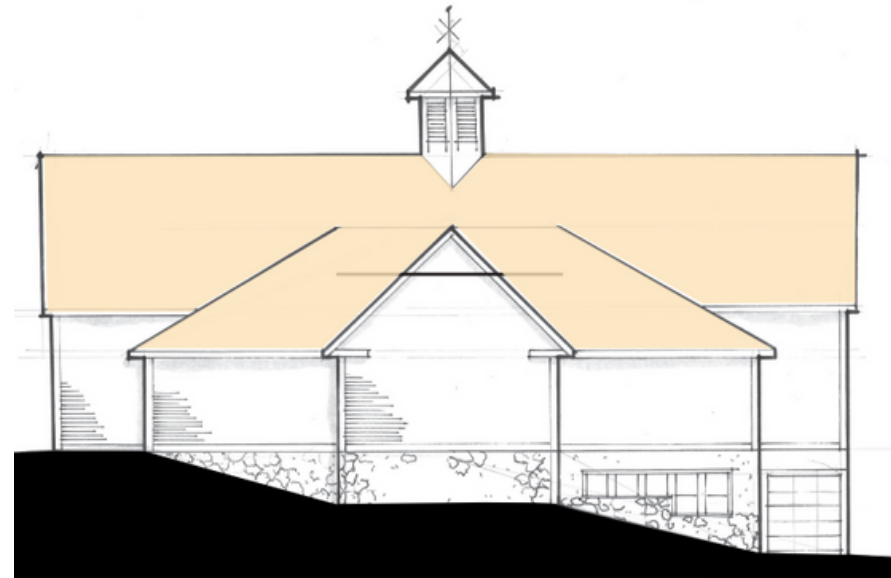


Figure 7: Example of exterior view (south elevation).

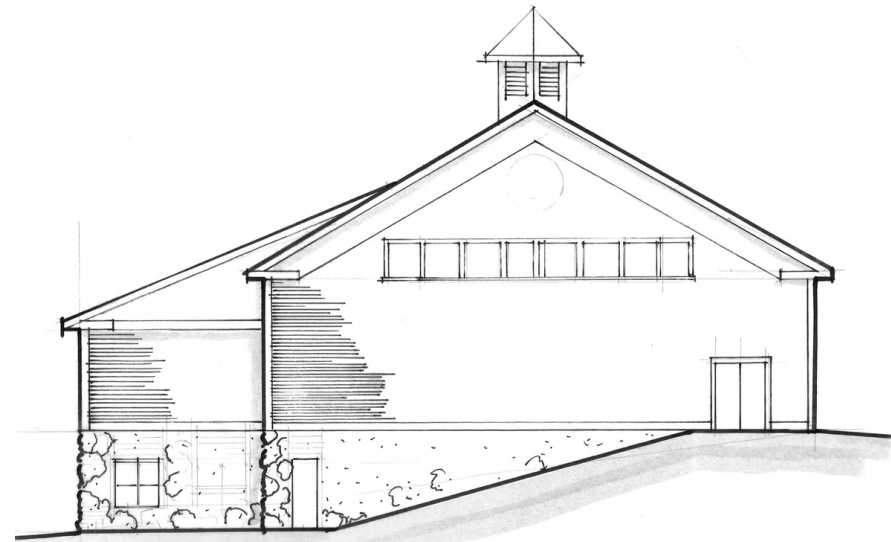
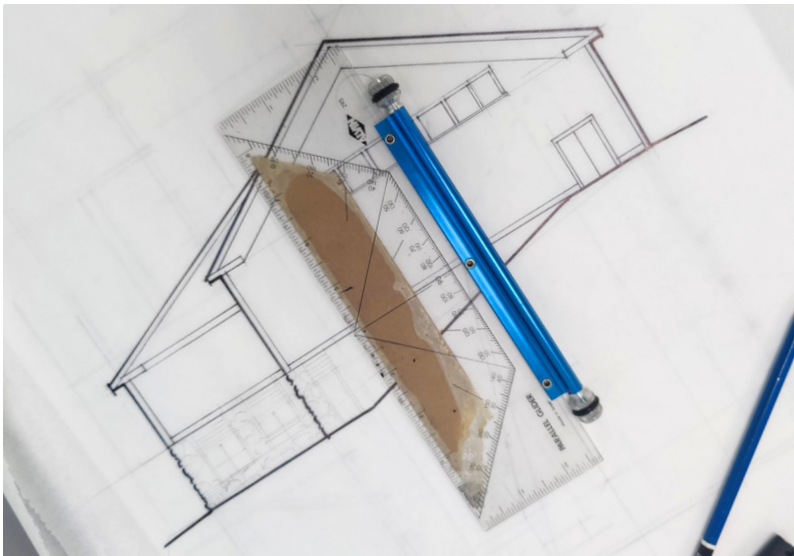


Figure 8: Example of exterior view (north elevation).

# Route 125, Access, & Parking

New Hampshire Route 125 presents many challenges to the Brentwood Recreation Center. With about 15,000 vehicles per day traveling at speeds of 55mph and above, walking or biking across NH 125 in order to get from the local school or library to the Recreation Center is nearly impossible and deadly. Even driving to and from the recreation center is potentially risky, as the number of automotive crashes continue to rise in the area.

Our team believes that Brentwood could improve traffic conditions by pursuing the following two recommendations related to Route 125 and access to the recreation area:

1. Relocate existing driveway/entrance to the Brentwood Rec southerly on NH Route 125.
2. Improve walking and biking conditions along NH Route 125.
3. Reconfigure current parking and develop new tiered parking.



Figure 9: Aerial view of access and parking area.



Current entrance/access to Brentwood Rec off of NH Route 125.



NH Route 125 poses a safety concern for drivers and others trying to connect from the rec area to other community assets.



# Route 125, Access, & Parking

(Continued)

## 1. Relocate Existing Driveway/Entrance to the Brentwood Recreation Center.

The current driveway onto Route 125 for the recreation facility has experienced ongoing challenges for safety and function given the reduced site distances and speeding traffic along NH Route 125.

At the advice of our Charrette Team member from the New Hampshire Department of Transportation, a full relocation of the current driveway curb cut for major public uses is being proposed. The recommendation is to shift the driveway south on Route 125 to the intersection of Route 125 and Crawley Falls Road with the height of land with maximum visibility in both directions.

At this location, a traffic calming modern roundabout is proposed to slow traffic speeds and better accommodate the turning movements off of Route 125 in all directions. Whereas south of Route 125 the signaled intersection has actually seen increased severe accidents, the installation of this roundabout would

conversely slow southbound traffic and improve safety along the road.

A central driveway relocated to the roundabout for the recreation center and fields would be developed and could potentially be done in association with New Hampshire DOT safety improvements along route 125. This driveway would enter the recreation field site at the southern property border, and then turn to a central location placed between the existing recreation facility and the proposed multipurpose recreation center.

The roundabout also creates space for a town gateway feature that can additionally contribute to slowing traffic along Route 125 and improving safety for all users, including drivers, pedestrians, and bicyclists. It also provides better access for all driveways and streets off of the new intersection location and creates a feasible connection between the rec area and other town amenities like the public library, town offices, and local school.

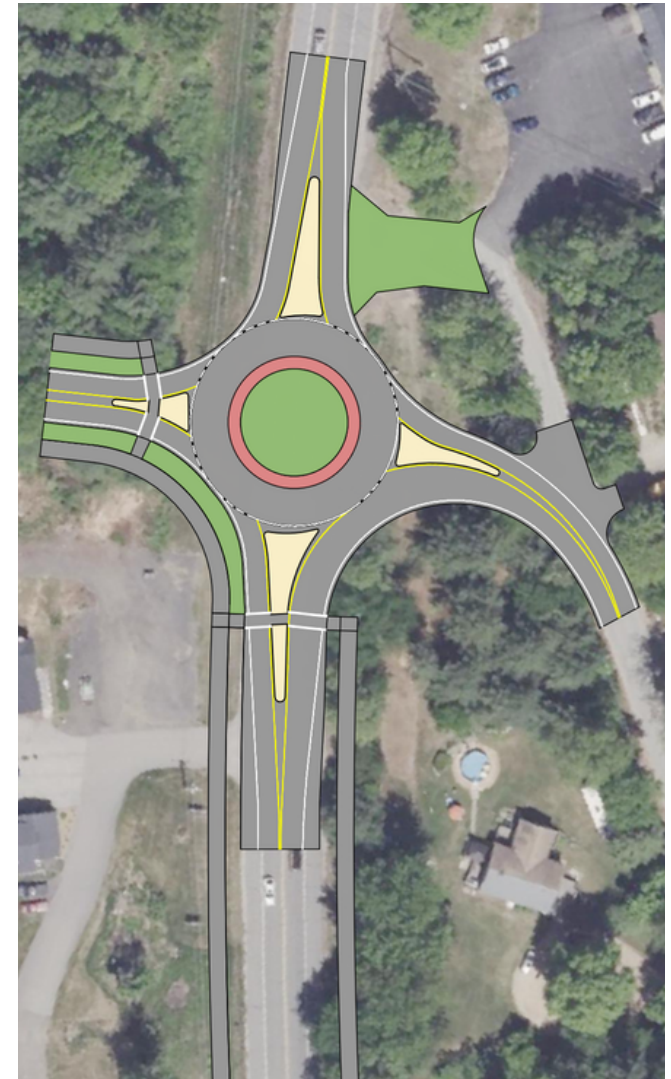


Figure 10: Mock-up of roundabout and relocated entrance to the rec area at the intersection of Route 125 and Crawley Falls Road.

# Route 125, Access, & Parking

(Continued)

## 2. Improve Walking and Biking Conditions Along NH Route 125.

This can include sidewalks on both sides of NH 125 (due to the wide right-of-way), the north side of NH 111A, Crawley Falls Rd, and/or Dalton Rd (See Figure 12)

In addition, to just adding sidewalks on roads with wide enough right-of-way (NH 125 for example) other items to consider would be grass buffers, extra wide sidewalks/multi-use paths, ornamental lighting, banners, trees, welcome/wayfinding signs, etc. (See Figure 3)

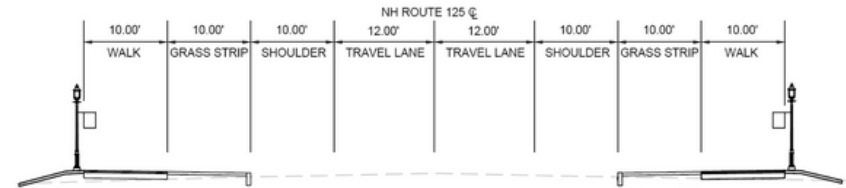


Figure 11: Example of pedestrian-friendly right-of-way that could be constructed along NH Route 125.

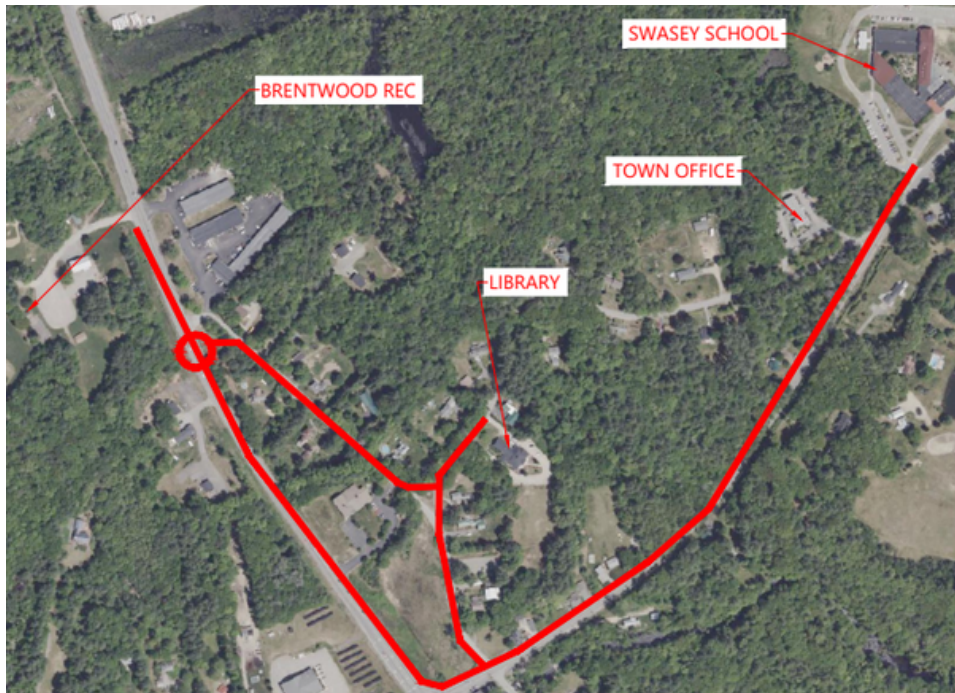


Figure 12: Proposed sidewalk locations connecting the Brentwood Rec to other key community assets and locations.



Figure 13: Pedestrian-friendly roundabout serves as a new and improved entrance to Brentwood Rec from Route 125, as depicted in Figure 1 on page 12.



# Route 125, Access, & Parking

(Continued)

## 3. Reconfigure Current Parking and Develop New Tiered Parking.

Improvements to the existing back parking area would serve users of the athletic fields and could also be developed as trailhead parking for users of the recreational and nature trails within the town as well as adjacent SE New Hampshire Land Trust properties.

As the back parking area is quite informal, without any space or lane designation, the proposed site plan shows a simple regrading of the area so that lanes of parking and circulation can be defined for more orderly use. This also allows for significantly increased utilization.

The present driveway from the Rec facilities to the back parking area, which divides the park from the present baseball field to the north and the populated play area to the south, was identified as an area of concern, specifically a safety concern related to people walking across the driveway and people driving excessively fast. Alternative routes to access the area were considered and, although there are topographical challenges, a potential route for a relocated driveway was identified in the field to the east and north

of the baseball field through the wooded area - currently an underutilized area.

New parking for approximately 100 cars is being recommended to be tiered, or terraced, down the gradual hill between the height of land near the Route 125 entrance driveway and the low lying property in between the existing recreation facility and the new multi-purpose community center.

Shade trees, stormwater solutions, pedestrian walkways, and open space is associated with the new parking which is adjacent to the trails and to the recreation center, helping to support a nice cohesive overall plan.

The existing driveway could still be retained as service and delivery, but without signage indicating that it is an entrance to the facility.

A new sign would be nicely located at the roundabout to welcome people to the recreation area and potentially the expanded town administration building should it be relocated here.



Existing back parking area.

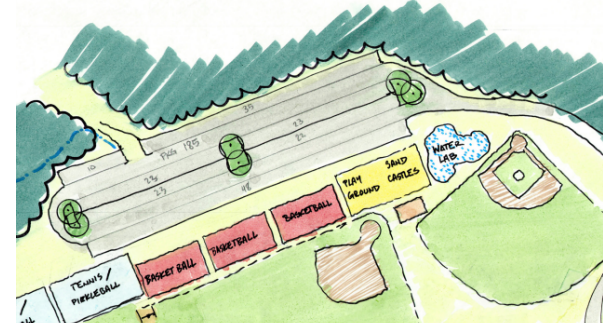


Figure 14: Improvements to back parking area would add spaces and increase safety.



Figure 15: Terraced parking maximizes topography near the proposed new access point, adding ~100 parking spaces and stormwater improvements.

# Operations of the Community Center

The Brentwood Recreation Center is a valuable asset within the community. It provides a vast number of services and uses to residents and visitors alike. However, based on what we learned during the charrette, our team believes there are a couple of ways in which the operation of the center could be made more accessible and efficient to relieve stress on the Brentwood Recreation Department.

Our team believes that Brentwood could better improve operations in the following ways:

## Add Additional Staff Positions to the Recreation Department

- Full-time Recreation Director to handle day-to-day operations and rentals
- Part-time Engagement & Volunteer Coordinator to handle long-term contracts, partnerships, and programming
  - Manage concessions stand (Potential for partnerships with local Girl/Boy Scouts)
  - Engage volunteers in facility maintenance (work with local volunteer organizations like the Bowhunters)

## Create an Interactive Website

- Add the ability to make online bookings & registrations
- Add the ability to see real-time availability of fields
- Include facility and parking maps

## Increase Town Investment in Recreation Department

- Brentwood Recreation Center plays a huge role in the community and increased investment is a must in order to meet the greater need and demand

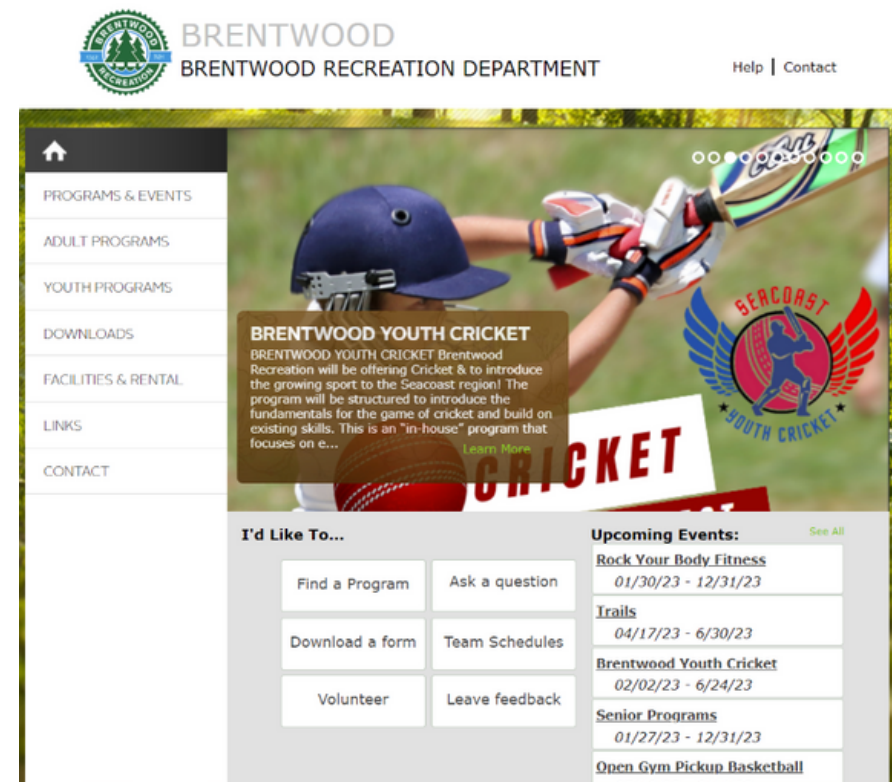


Image from the Brentwood Recreation Department's website.



# Trails & Regional Connectivity

Brentwood is surrounded by a number of small and large communities that have their own dynamics. However, it is important to recognize that Brentwood is interconnected to these neighboring communities through NH Route 125 and 111A, as well in many other ways. Brentwood Recreation Center is known for its many trails and the possibility of creating an interconnected trail system within the region could benefit not only Brentwood, but also the neighboring communities.

Our team believes that Brentwood could integrate this idea in the following ways:

- Create a trail system through the town of Brentwood that integrates existing trails at the Brentwood Recreation Center and connects Brentwood to neighboring communities like Exeter (See Figure 16)
- Host community events that involve not only local residents, but also other residents from nearby communities and the region. This creates a place for residents from neighboring communities to form connections and share ideas.



Lantern Festival - Peterborough, NH



Winnie the Pooh Trail - Barrington, NH



Figure 16: Example of a potential trail system that could connect Brentwood to other nearby communities.

# Community Design & Placemaking

Brentwood is a small, vibrant community with a rich history of volunteerism and involvement. The residents of Brentwood desire to preserve these deep roots, while also finding a way to reflect the needs of an ever-changing community.

Increasing community arts, design, and placemaking capitalizes on the many existing assets of Brentwood (such as the partnerships with the New England Blacksmiths and Bowhunters, strong rural character, small pavilions, sports fields, etc.) in order to create dynamic public spaces that promote happiness and wellbeing amongst all residents. In addition, many of the recommended design elements are intended to be calm traffic and create a village center feel and identity that helps to establish Brentwood as a distinctive destination.

Our team believes that Brentwood could integrate this idea in the following ways:

- 1. Developing Branded Wayfinding**
- 2. Creating Uniform Visual Identity**
- 3. Activating Pavilions and Fields**
- 4. Implementing Vibrant Imagery**
- 5. Increasing Walkability**

More on these ideas is below and on the following page.

## **1. Developing Branded Wayfinding**

Create unique, attractive welcome and directional signs to make Brentwood more pedestrian friendly (Figure 17).

## **2. Creating Uniform Visual Identity**

Decorate the community with thematic local art on trailheads, bike racks, and town markers (Figure 18).

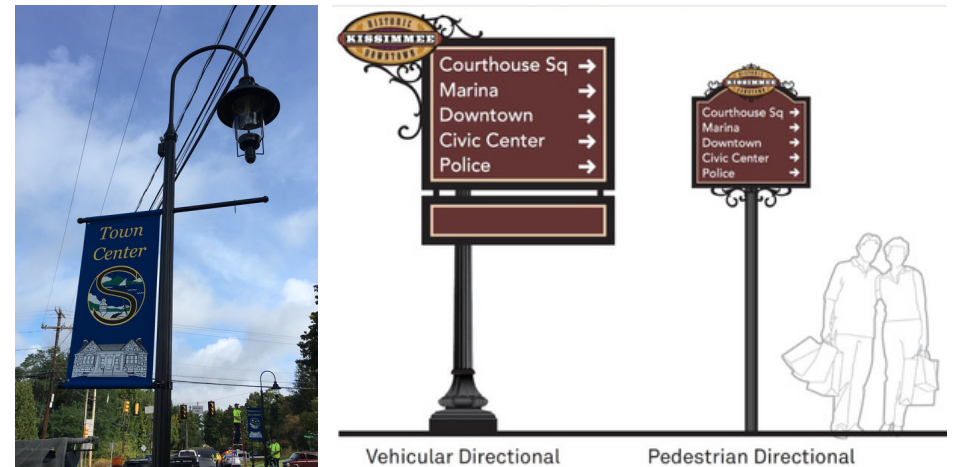


Figure 17: Examples of welcome and wayfinding directional signs.



Figure 18: Example of public art used across specific communities to create uniform visual identity.



# Recommendations: Community Design & Placemaking

## 3. Activating Pavilions and Fields

Host large scale community events in existing open spaces and enlarge these space in the future to accommodate more activities and people (Figure 19).



Figure 19: Example of different uses for larger scale outdoor spaces such as pavilions and fields.

## 4. Implementing Vibrant Imagery

Paint and decorate sidewalks, intersections, sports courts, benches, etc., with vibrant images to highlight local talent and bring color into the community (Figure 20).



Figure 20: Example of vibrant imagery in public spaces.

## 5. Increasing Walkability with Lighting

Add decorative pedestrian lighting to help shift the visual impact of the NH Route 125 corridor from car/traffic-centered to an environment focused on human scale and activity (Figure 21).

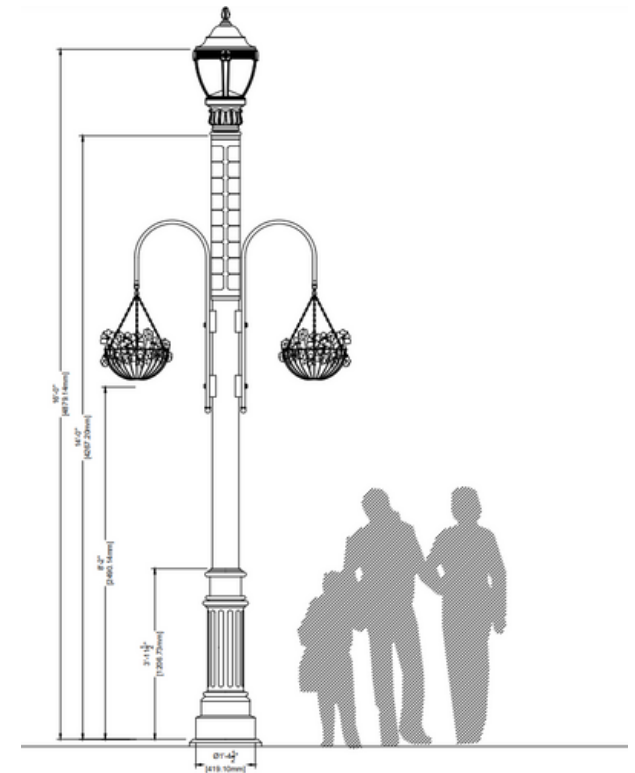


Figure 21: Example of decorative pedestrian-scale lighting that can increase feelings of safety and overall walkability.



# A Full View of the Recommendations



Figure 22: Full Recommended Site Plan for Brentwood Rec



# Resources & Opportunities

## **Community Design & Placemaking Resources and Funding:**

- [Bloomberg Philanthropies, Asphalt Art](#)
- [Citizens Institute on Rural Design \(CIRD\)](#)
- [Creative Placemaking Public Resources Guide](#)
- [National Endowment for the Arts, Our Town](#)
- [New Hampshire State Council on the Arts](#)
- [UNH Cooperative Extension, Characteristics of a Vibrant Downtown](#)
- [USDA Rural Placemaking Innovation Challenge](#)
- [The Trust for Public Land: The Field Guide for Parks and Creative Placemaking](#)

## **Trails and Regional Connectivity Resources and Funding:**

- [Rails to Trails Conservancy](#)
- [NH Department of Natural and Cultural Resources](#)
- [National Recreation and Parks Association: Safe Routes to Parks Action](#)

## **Traffic Calming and Parking Resources and Funding:**

- [NH Department of Transportation Transportation Alternatives Program](#)
- [Rockingham Planning Commission](#)
- [DOT Navigator](#)

## **Multi-Purpose Community Center Resources and Funding:**

- [NH Municipal Association](#)
- [Foundation for Healthy Communities](#)
- [Project for Public Spaces](#)

## **Operations Resources and Funding:**

- [NH Small Business Development Center](#)
- [Small Business Administration](#)
- [SCORE Association](#)
- [UNH Cooperative Extension](#)
- [New Hampshire Parks & Recreation Association](#)
- [Regional Economic Development Center](#)
- [Change Lab Solutions: Complete Parks Playbook](#)



# Visioning for the Future: It is Up to You!

Brentwood is a charming town with residents that are passionate about finding ways to improve recreation and community building opportunities for all residents without disrupting the charm and character of the community. How you choose to do that is up to you.

This report provides recommendations, not mandates, which are up to you to explore, evaluate, and discuss. Ultimately, the choice of where to take Brentwood is up to its residents - and that means all of you! We recommend that you circulate this report to all residents and community members of the Town, so that anyone interested can come together for a general review of the recommendations and a discussion about what's next.

If and when Brentwood begins to develop and implement various recommendations from this report, we further recommend that interested people are brought in to be a part of the planning and implementation from the beginning, not just for input, but for true dialogue and participation.

Good luck!



***What is next for Brentwood? Instead of thinking about problems to be solved, think about possibilities!***







[www.plannh.org](http://www.plannh.org)

Plan NH | P.O. Box 1105, Portsmouth, NH, 03802 | 603-452-7526 | [info@plannh.org](mailto:info@plannh.org)