



Deconstructing Deconstruction

Plan NH: Built to Last

September 17, 2025





Our mission is to innovate, implement, and scale the environmental solutions that communities need to thrive.



CET Partners



The Fink Family
FOUNDATION



MASSACHUSETTS
CLEAN ENERGY
CENTER



Massachusetts Department
of Energy Resources



Harvard
Food Law and Policy Clinic

A Division of the Center for Health Law and Policy Innovation

Walmart  Foundation



Williams



WG+E
WESTFIELD GAS + ELECTRIC



NATURAL
RESOURCES
DEFENSE
COUNCIL



The Irene E. & George A.

Davis Foundation



Rhode Island
Department of
Environmental
Management

nationalgrid



BERKSHIRE
GAS

An AVANGRID Company



Dr. Robert C. and Tina Sohn
FOUNDATION



The Claneil Foundation



**Charitable
Foundation**



Mass
Cultural
Council



PeoplesBank



E4 THE
FUTURE



Thermostat Recycling
CORPORATION

COVANTA
ENERGY
for a cleaner world



Connecticut Department of
ENERGY &
ENVIRONMENTAL
PROTECTION



NEW YORK
STATE OF
OPPORTUNITY

Department of
Environmental
Conservation

EVERSOURCE
ENERGY



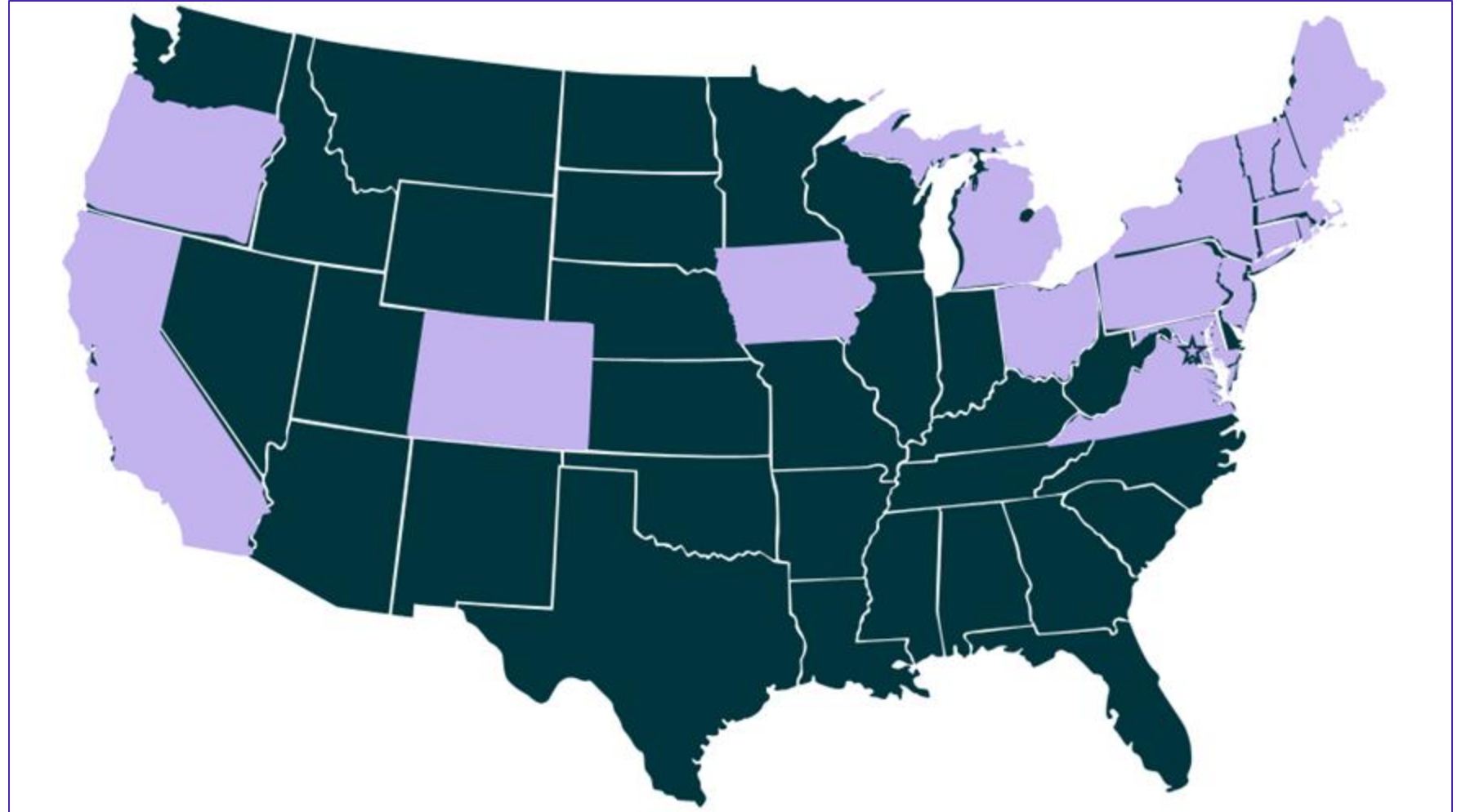
RESNET
RESIDENTIAL ENERGY SERVICES NETWORK



**GREEN ENERGY
CONSUMERS ALLIANCE**



**70,000 tons of CO2
emissions avoided
since 2013**





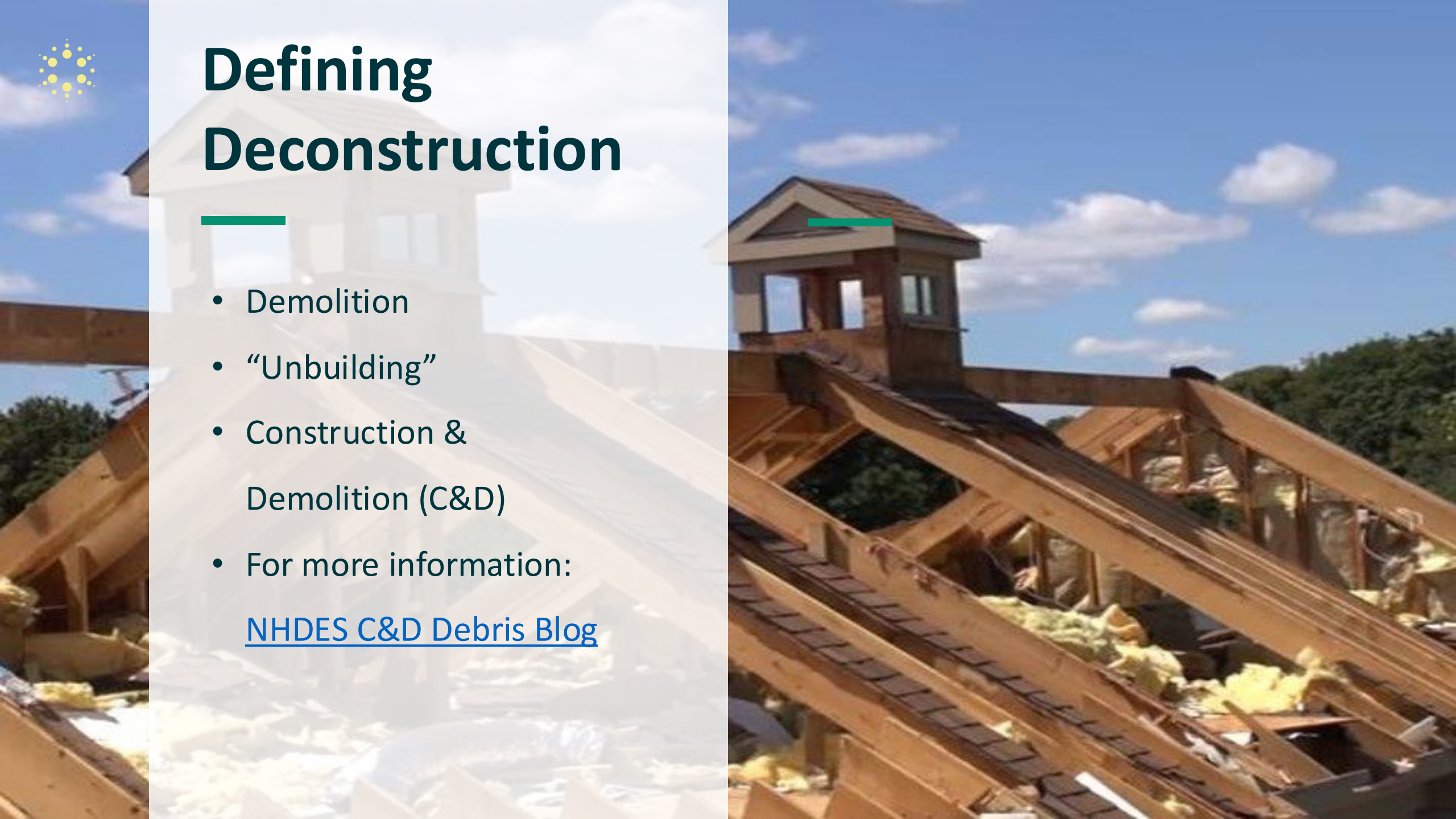
A little about me





Defining Deconstruction

- Demolition
- “Unbuilding”
- Construction & Demolition (C&D)
- For more information:
[NHDES C&D Debris Blog](#)





Deconstruction in New Hampshire: How to Start

INTRODUCTION

This resource is intended for homeowners, property managers, and businesses in New Hampshire who are interested in alternatives to building demolition and are instead considering strategies with lower environmental impact. Deconstruction doesn't have to be all or nothing; it can be as simple or as salvaging cabinetry and donating furniture. Options range from a pre-demolition cleanout to reclaim materials, to incremental deconstruction that salvages specific valuable parts, all the way to a full deconstruction of the structure. This flexibility allows for gradual adoption and adaptation of deconstruction practices, making it accessible and manageable for a variety of projects and goals.

Deconstruction is the process of disassembling a building or parts of a building in order to salvage and reuse and/or donate its materials. Depending on the building and its salvageable materials, methods of deconstruction can vary.

Deconstruction Pathways	SCALE: MIN → IMPACT → MAX					
	TYPE	Pre-Demo Clean Out	Soft-Stripping	Partial Deconstruction	Full Deconstruction	Adaptive Reuse
	DEFINITION	Removing items like furniture that can be donated before the project begins	High-value and easy-to-remove fixtures like appliances, lighting, cabinetry, and architectural items	Additional material, including doors, trim, flooring, and windows	Salvaging all materials with value and outlets, such as structural steel and lumber	Maintaining a building structure while renovating its interior for different purposes

BENEFITS OF DECONSTRUCTION

Choosing deconstruction offers a broad spectrum of benefits, including potential cost savings, marketing opportunities, job creation, and positive environmental impact.

Cost: While costs vary by project, deconstruction provides an opportunity to save on disposal costs and receive associated tax deductions when donating to qualified nonprofits, potentially offsetting additional labor costs.

Marketing: Deconstruction projects small and large can be leveraged for brand recognition and can highlight your commitment to the community.

Job Creation: Reusing and recycling construction and demolition materials creates jobs. In fact, deconstruction creates 6 to 8 jobs for every 1 job that demolition creates.

Environmental: Deconstruction reduces greenhouse gas (GHG) emissions and embodied carbon (the greenhouse gas emissions arising from the manufacturing, transportation, installation, maintenance, and disposal of building materials), and preserves natural resources.



Deconstruction is scalable

SCALE: MIN → IMPACT → MAX						
Deconstruction Pathways	TYPE	Pre-Demo Clean Out	Soft-Stripping	Partial Deconstruction	Full Deconstruction	Adaptive Reuse
	DEFINITION	Removing items like furniture that can be donated before the project begins	High-value and easy-to-remove fixtures like appliances, lighting, cabinetry, and architectural items	Additional material, including doors, trim, flooring, and windows	Salvaging all materials with value and outlets, such as structural steel and lumber	Maintaining a building structure while renovating its interior for different purposes



C&D Recycling and Source Separation





Why Deconstruction?

- Resource conservation
- Waste reduction
- Cost savings
- Historic preservation
- Preserve embodied carbon
- Community

“The greenest building is the one that already exists.”



Construction Assistance – Available Now!

Help for contractors, building owners,
architects, & homeowners:

- Waste Management Plan
- Building Specs
- Material Reuse Outlets
- C&D Recycling
- Source Separation

For more info on specific Materials:
[Visit our C&D guidance](#)



Elias Brookings School



- Pre-demolition cleanout
- **23 tons** recycled
- **10 tons** reused

Home City Development, Inc.



Simmons University

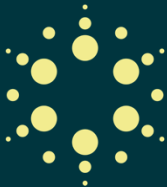
Excellent Timeline

One year of advanced planning and preparation from Summer 2021 to Spring 2022

Impressive Metrics

12+ tons (24,000lbs) of material salvaged, including furniture, fixtures, and glassware items.

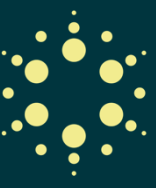




Deconstruction Contractors

DECONSTRUCTION CONTRACTORS

Business Name & Address	Services Offered	Service Area	Commercial or Residential Services?	Contact Information/Website
Deconstruction Works West Dummerston, VT	Salvage and reuse of materials from houses and businesses.	1 hour radius of Battleboro 1 hour radius of Hanover Lake Winnepesaukee Region	Both	Erich Kruger (802) 380-9333 erich@deconstructionworks.com Website
Select Demo Services, LLC Salem, NH	Problem solving and developing ways to recycle and repurpose.	All of New Hampshire	Commercial	Randy Scott (603) 401-3092 rscott@selectdemo.com
Costello Dismantling Co West Wareham, MA	General contracting for projects interested in deconstruction.	All of New Hampshire	Both	Daniel Costello (508) 291-2324 dan@costellodismantling.com Website



Building Material Reuse Outlets

Organization Name & Address	Services Offered	Service Area	Commercial or Residential?	Contact Information/Website
Boston Building Resources Boston, MA	Reuse outlet accepts donations of fencing, appliances, windows, doors, clean lumber, tools, and more	All of New Hampshire	Both	Paul Kiefer (617) 442-2262, ext. 232 paul@bostonbuildingresources.com Andrew Thompson andrew@bostonbuildingresources.com
Architectural Salvage, Inc. Exeter, NH-3 Mill St, Exeter, NH	Reuse outlet accepts donations of doors, mantels, sinks, lighting fixtures, lumber and more	All of New Hampshire	Both	(603) 773-5635
Hancock Academy 106 Foss Lane, Hancock, ME 04640	Outlet for materials, depending on size and quantity. Materials can be delivered or picked up. There may be fees.	All of New Hampshire	Commercial	Randy Scott (603) 401-3092 randy.scott@hancockacademy.org
Institution Recycling Network/The Reuse Network 26 Pleasant St, Suite 2a, Concord, NH 03301	Accepts excess furniture from school districts, companies, hospitals, government agencies, colleges and universities. They find charitable new homes for large volumes of furniture and equipment that reuse centers can't handle, often by shipping overseas to where needs are great. There is a cost to donate with IRN.	US	Commercial	Emerson Lennon (603) 496-0749 Website
Nor'East Architectural Antiques 16 Exeter Rd, South Hampton, NH	Accepts & stocks an extensive inventory of architectural salvage and antique building materials from 1700-1940	South Hampton and surrounding areas	Both	(603) 394-0006 mail@noreast1.com Website
The Cover Store 158 S. Main St, White River Junction, VT	Accepts lumber, plywood, sheetrock, electrical and plumbing supplies, tile, flooring, roofing, rigid insulation, clean, dry packaged fiberglass insulation. Accepts cabinets, doors, windows, toilets, sinks, housewares, lighting and more.	Accepts drop-off donations Pick-ups within 30 minutes of White River Junction, VT	Residential	(802) 296-7241 store@coverhomerepair.org Website



Building Material Reuse Outlets Continued

BUILDING MATERIALS REUSE OUTLETS

Organization Name & Address	Services Offered	Service Area	Commercial or Residential?	Contact Information/Website
NH Habitat for Humanity ReStore 29 Fox Run Rd, Newington, NH 03801	Reuse outlet accepts donations of appliances, air conditioners, carpet, doors, roofing, plywood, and more. They also offer free pickups.	All of Strafford County and parts of Rockingham County for donation pickups	Both	(603) 750-3200 donate@nhrestore.org Website
Pemi Valley Habitat for Humanity 583 Tenney Mountain Hwy, Plymouth, NH 03264	Reuse outlet accepts donations of hardware, appliances, antiques, flooring, electronics, plumbing, and more. They also offer free pickups.	Plymouth and nearby surrounding towns	Residential	(603) 536-1333 restore@pemivalleyhabitat.org
Home Tomorrow Online Store & Donation Center 264 S River Rd, Bedford, NH 03110	Accepts donations of new and gently used home furnishings (Does not allow office furniture, armoires or entertainment centers!)	Free donation pickups from Manchester/Bedford areas	Both	(603) 792-0460 store@hometomorrow.org pickup@hometomorrow.org



Outdoor Trash, Recycling, & Food Scrap Storage Considerations

Equipment

Space

Placement

Electrical hookup





Indoor Trash, Recycling, & Food Scrap Storage Considerations

Space

Equipment

Placement



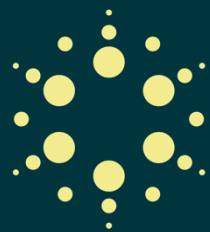


Wasted Food Considerations

- Wasted Food Tracking
- Wasted Food Prevention
- Food Purchasing
- Surplus Food Donation
- Food Scrap Diversion

FACILITY MATERIALS MANAGEMENT PLAN

MATERIAL	DESCRIPTION/ HOW TO PREPARE	INTERIOR BINS	HAULER PICKUP LOCATION	PHOTOS



Cardboard



CARDBOARD ONLY

Flattened cardboard



NO

Food-Soiled Materials
Waxed Cardboard
Coffee Cups
Bubble envelopes



Scrap Metal



YES

Scrap metal,
Sprinkler pipe,
Metal studs



NO

Food soiled materials,
Waxed cardboard
Electronics,
Or trash



Food Scraps



ALL FOOD SCRAPS

Fruit & vegetable peels
Dairy, eggs, grains, bread
Meat, fish, poultry
Bones, shells



NO

Tissues, napkins, paper towels
Compostableware
Coffee cups, wrappers
Plastic, metal, glass



Mixed C&D Debris



YES

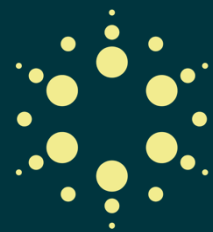
Wood
Metal
Cardboard
Shingles



NO

Appliances
Furniture
Batteries
Fluorescent light bulbs





C&D Training Video –Structure Tone





Waste Reduction Assessment

In-person or virtual visit to evaluate existing waste streams and learn about waste reduction goals



Recommendations

Customized report of opportunities to prevent, recover, and divert waste



Follow up

Support through the implementation of new strategies, direct connections to service providers



Education

Signage, staff trainings, and more

No-Cost Technical Assistance



MA | CT | RI | ME | NH
NY | NJ | PA | MD | OH

THANK YOU!



Emma Sabella

Senior Waste Reduction
Consultant

413.387.2045

Emma.Sabella@cetonline.org

cetonline.org

